

# State Street Target Retirement 2020 Fund - Class K

# SSBOX

Fact Sheet  
Multi-Asset

As of 03/31/2024

## Fund Objective

The investment objective of the State Street Target Retirement 2020 Fund is to seek capital growth and income over the long term.

## Process

SSGA Funds Management, Inc., ("SSGA FM" or the "Adviser"), the investment adviser to the Fund, manages the Target Retirement 2020 Fund using a proprietary asset allocation strategy. The Fund is a "fund of funds" that invests in a combination of mutual funds and ETFs sponsored by the Adviser or its affiliates (the "Underlying Funds"). The Underlying Funds may invest in a wide variety of asset classes, including equity and fixed-income securities of issuers anywhere in the world, including emerging markets investments, and including, among others, high yield, commodity, and real estate investments. The Underlying Funds may invest in obligations of domestic U.S. issuers, non-U.S. issuers, or both. Over time, the allocation to asset classes and funds change according to a predetermined "glide path". (The glide path represents the shifting of asset classes over time and does not apply to the Target Retirement Fund.) Each Fund's asset allocation will become more conservative as it approaches its target retirement date.

## Key Features

- Seeks to manage key risks that investors face over time, which include shortfall, longevity, volatility and inflation.
- Ensures a disciplined approach to asset allocation with strategic forecasts and rebalancing.
- Creates diversified portfolios for participants with exposure to a broad range of cost-effective equity and fixed income asset classes.

## Risk Management

SSGA measures and adjusts each Fund's risk exposure over time given the Fund's target retirement date. SSGA monitors the overall risk of the Fund, in order to avoid unintended risk related to the

**Not FDIC Insured. No Bank Guarantee. May Lose Value.**

Funds' target retirement date or other investment time horizon. SSGA attempts to manage risk by, among other things, monitoring asset allocation closely, maintaining diversification, and performing on-going investment reviews.

## About The Primary Benchmark

The S&P 500<sup>®</sup> Index is a gauge of large-cap U.S. equities and is composed of roughly five hundred (500) selected stocks, all of which are listed on national stock exchanges and spans over approximately 24 separate industry groups.

## About The Secondary Benchmark

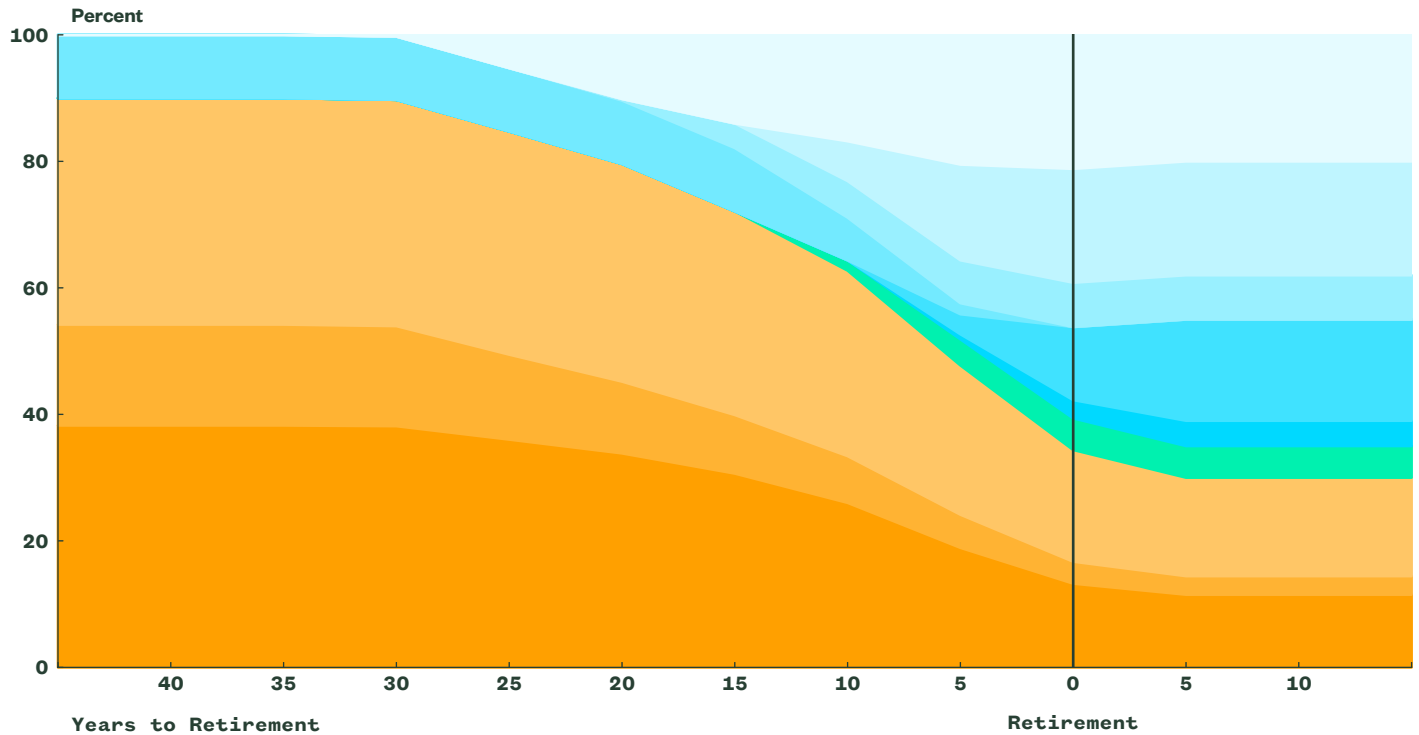
The State Street Target Retirement 2020 Composite Index consists of several different indexes, and is designed to provide exposure to a variety of asset classes.

## Fund Information

Inception Date	September 30, 2014
Net Asset Value	\$10.92
Total Net Assets (000)	\$912,987
CUSIP	85749R800
Primary Benchmark	S&P 500 Index
Secondary Benchmark	State Street Target Retirement 2020 Composite Index
Distributor	State Street Global Advisors Funds Distributors, LLC
Investment Manager	SSGA Funds Management, Inc.

## State Street Target Retirement Funds Glide Path

Investments become more conservative over time



### Equity

- State Street Equity 500 Index II Portfolio
- State Street Small/Mid Cap Equity Index Portfolio
- State Street Global All Cap Equity ex-U.S. Index Portfolio

### Alternatives

- SPDR Dow Jones Global Real Estate ETF

### Fixed Income

- State Street Aggregate Bond Index Portfolio
- SPDR Bloomberg 1-10 Year TIPS ETF
- SPDR Bloomberg High Yield Bond ETF
- SPDR Portfolio Long Term Treasury ETF
- SPDR Portfolio Short Term Treasury ETF
- SPDR Portfolio Short Term Corporate Bond ETF

**An investment in a Target Retirement Fund is not guaranteed at any time, including on or after the target date.**

Assumptions and forecasts used by SSGA in developing the Portfolio's asset allocation glide path may not be in line with future capital market returns and participant savings activities, which could result in losses near, at or after the target date year or could result in the Portfolio not providing adequate income at and through retirement. Refer to last page for index definitions.

Prior to August 24, 2021, all Bloomberg fixed income indices were known as Bloomberg Barclays fixed income indices.

If your account holds Russian securities and instruments, then as of the date of this publication, they have been fair valued. Such fair value may be zero. If your portfolio holds such Russian securities and instruments, then the portfolio may not be able to dispose of such securities and instruments depending on the relevant market, applicable sanctions requirements, and/or Russian capital controls or other counter measures. In such circumstances, the portfolio would continue to own and have exposure to Russian-related issuers and markets. Please refer to your portfolio holdings report.

Total Return (As of 03/31/2024)			
	Fund at NAV (%)	Primary (%) <sup>1</sup>	Secondary (%) <sup>2</sup>
<b>Cumulative</b>			
QTD	2.54	10.56	2.51
YTD	2.54	10.56	2.51
<b>Annualized</b>			
1 Year	9.66	29.88	9.77
3 Year	2.22	11.49	2.19
5 Year	5.68	15.05	5.69
10 Year	-	-	-
Since Fund Inception	5.52	12.95	5.62

Gross Expense Ratio (%)	0.25
Net Expense Ratio* (%)	0.09
30 Day SEC Yield (%)	3.24
30 Day SEC Yield (Unsubsidized) (%)	3.09
Maximum Sales Charge (%)	-

**Past performance is not a reliable indicator of future performance. Investment return and principal value will fluctuate, so you may have a gain or loss when shares are sold. Current performance may be higher or lower than that quoted. All results are historical and assume the reinvestment of dividends and capital gains. Visit [www.ssga.com](http://www.ssga.com) for most recent month-end performance. Performance of an index is not illustrative of any particular investment. It is not possible to invest directly in an index. Index returns are unmanaged and do not reflect the deduction of any fees or expenses. Index returns reflect capital gains and losses, income, and the reinvestment of dividends. An annualized yield that is calculated by dividing the investment income earned by the fund less expenses over the most recent 30-day period by the current maximum offering price that does not take into account expense ratio subsidizations. The gross expense ratio is the fund's total annual operating expenses ratio. It is gross of any fee waivers or expense reimbursements. It can be found in the fund's most recent prospectus.**

<sup>1</sup>Primary Benchmark is S&P 500 Index.

<sup>2</sup>Secondary Benchmark is State Street Target Retirement 2020 Composite Index. <sup>\*</sup>The Fund's investment adviser, SSGA Funds Management, Inc. (the "Adviser" or "SSGA FM"), is contractually obligated until April 30, 2024 (i) to waive up to the full amount of the advisory fee payable by the Fund, and/or (ii) to reimburse the Fund to the extent that Total Annual Fund Operating Expenses (exclusive of non-recurring account fees, interest, taxes, extraordinary expenses, and distribution, shareholder servicing, and sub-transfer agency fees) exceed 0.09% of average daily net assets on an annual basis. This waiver and/or reimbursement may not be terminated prior to April 30, 2024 except with approval of the Fund's Board of Trustees.

<sup>\*</sup>The subsidized yield reflects the yield calculation with expense limitations currently in effect. Without the limitation returns would have been lower.

#### Characteristics

Number of Holdings	10
--------------------	----

Holdings As of 29 Feb 2024	Weight (%)
State Street Aggregate Bond Index Portfolio	20.36
State Street Equity 500 Index II Portfolio	17.84
SPDR Bloomberg 1-10 Year TIPS ETF	17.80
SPDR Portfolio Short Term Treasury ETF	13.04
State Street Global All Cap Equity ex-US Index Portfolio	12.57
SPDR Bloomberg High Yield Bond ETF	6.97
SPDR Dow Jones Global Real Estate ETF	4.75
State Street Small/Mid Cap Equity Index Portfolio	3.34
SPDR Portfolio Short Term Corporate Bond ETF	3.31
U.S. Dollar	0.03

Asset Allocation	Weight (%)
Alternatives	4.75
Equity	33.76
Fixed Income	61.49

Totals may not equal 100 due to rounding.

Characteristics, Holdings and Sector Weights shown are as of the date indicated, are subject to change, and should not be relied upon as current thereafter.

## ssga.com

### Information Classification: General

#### State Street Global Advisors

One Iron Street, Boston MA 02210  
T: +1 866 787 2257

#### Glossary

**NAV** is the market value of a mutual fund's and ETFs total assets, minus liabilities, divided by the number of shares outstanding.

#### Important Risk Information

Investing involves risk including the risk of loss of principal.

The whole or any part of this work may not be reproduced, copied or transmitted or any of its contents disclosed to third parties without SSGA's express written consent.

All information is from SSGA unless otherwise noted and has been obtained from sources believed to be reliable, but its accuracy is not guaranteed. There is no representation or warranty as to the current accuracy, reliability or completeness of, nor liability for, decisions based on such information and it should not be relied on as such.

The information provided does not constitute investment advice and it should not be relied on as such. It should not be considered a solicitation to buy or an offer to sell a security. It does not take into account any investor's particular investment objectives, strategies, tax status or investment horizon. You should consult your tax and financial advisor. The trademarks and service marks referenced herein are the property of their respective owners. Third party data providers make no warranties or representations of any kind relating to the accuracy, completeness or timeliness of the data and have no liability for damages of any kind relating to the use of such data.

This communication is not intended to be an investment recommendation or investment advice and should not be relied upon as such.

**Asset Allocation** is a method of diversification which positions assets among major investment categories. Asset Allocation may be used in an effort to manage risk and enhance returns. It does not, however, guarantee a profit or protect against loss. Assumptions and forecasts used by SSGA FM in developing the Fund's asset allocation glide path may not be in line with future capital market returns and participant savings activities, which could result in losses near, at or after the target date year or could result in the Fund not providing adequate income at and through retirement.

**SSGA Target Date Funds** are designed for investors expecting to retire around the year indicated in each fund's name. When choosing

a Fund, investors should consider whether they anticipate retiring significantly earlier or later than age 65, even if such investors retire on or near a fund's approximate target date. There may be other considerations relevant to Target Date Fund selection and investors should select the fund that best meets their individual circumstances and investment goals. The funds' asset allocation strategy becomes increasingly conservative as it approaches the target date and beyond. The investment risks of each Target Date Fund change over time as its asset allocation changes.

The use of **leverage**, as part of the investment process, can multiply market movements into greater changes in an investment's value, thus resulting in increased volatility of returns.

**Derivative investments** may involve risks such as potential illiquidity of the markets and additional risk of loss of principal.

**Commodities** and commodity-index linked securities may be affected by changes in overall market movements, changes in interest rates, and other factors such as weather, disease, embargoes, or political and regulatory developments, as well as trading activity of speculators and arbitrageurs in the underlying commodities.

**Asset backed and mortgage backed securities** are subject to prepayment risk which can limit the potential for gain during a declining interest rate environment and increases the potential for loss in a rising interest rate environment. There are risks associated with investing in Real Assets and the Real Assets sector, including real estate, precious metals and natural resources. Investments can be significantly affected by events relating to these industries.

**Thinly traded securities** may be difficult to liquidate without taking a significant discount from current market value.

Investments in **small/mid-sized companies** may involve greater risks than in those of larger, better known companies.

The Fund is subject to substantially the same risks as those associated with the direct ownership of the securities or other assets represented by the exchange-traded products ("ETPs") in which the Fund invests. The shares of certain ETPs may trade at a premium or discount to their net asset value.

The value of the **debt securities** may increase or decrease as a result of the following: market fluctuations, increases in interest rates, inability of issuers to repay principal and interest or illiquidity in the debt securities markets; the risk of low rates of return due to reinvestment of securities during periods of falling interest rates or repayment by issuers with higher coupon or interest rates; and/or the risk of low income due to falling interest rates. To the extent that interest rates rise, certain underlying obligations may be paid off substantially slower than originally anticipated and the value of those securities may fall sharply. This may result in a reduction in income from debt securities income.

Investing in high yield fixed income securities,

otherwise known as "**junk bonds**", is considered speculative and involves greater risk of loss of principal and interest than investing in investment grade fixed income securities. These Lower-quality debt securities involve greater risk of default or price changes due to potential changes in the credit quality of the issuer.

**Foreign investments** involve greater risks than U.S. investments, including political and economic risks and the risk of currency fluctuations, all of which may be magnified in emerging markets.

The Fund's investments are subject to changes in general economic conditions, general market fluctuations and the risks inherent in investment in securities markets. Investment markets can be volatile and prices of investments can change substantially due to various factors including, but not limited to, economic growth or recession, changes in interest rates, changes in the actual or perceived creditworthiness of issuers, and general market liquidity. The Fund is subject to the risk that geopolitical events will disrupt securities markets and adversely affect global economies and markets. Local, regional or global events such as war, acts of terrorism, the spread of infectious illness or other public health issues, or other events could have a significant impact on the Fund and its investments.

#### Intellectual Property Information:

The S&P 500<sup>®</sup> Index is a product of S&P Dow Jones Indices LLC or its affiliates ("S&P DJI") and have been licensed for use by State Street Global Advisors. S&P, SPDR, S&P 500<sup>®</sup> US 500 and the 500 are trademarks of Standard & Poor's Financial Services LLC ("S&P"); Dow Jones<sup>®</sup> is a registered trademark of Dow Jones Trademark Holdings LLC ("Dow Jones") and has been licensed for use by S&P Dow Jones Indices; and these trademarks have been licensed for use by S&P DJI and sublicensed for certain purposes by State Street Global Advisors. The fund is not sponsored, endorsed, sold or promoted by S&P DJI, Dow Jones, S&P, their respective affiliates, and none of such parties make any representation regarding the advisability of investing in such product(s) nor do they have any liability for any errors, omissions, or interruptions of these indices. The Russell 1000<sup>®</sup> Index, Russell 2000<sup>®</sup> Index, Russell 3000<sup>®</sup> Index, and Russell Small Cap Completeness<sup>®</sup> Index are trademarks of Russell Investment Group and have been licensed for use by State Street Bank and Trust Company through its State Street Global Advisors Division. The Products are not sponsored, endorsed, sold or promoted by Russell Investment Group and Russell Investment Group makes no representation regarding the advisability of investing in the Product.

"Bloomberg<sup>®</sup>" and Bloomberg U.S. Aggregate Index, Bloomberg U.S. Government Inflation-linked Bond Index, Bloomberg US Government Inflation-Linked 1-10 Year Bond Index, Bloomberg High Yield Very Liquid Index, Bloomberg Long U.S. Treasury Index,

Bloomberg 1-3 Year U.S. Treasury Index and Bloomberg U.S. 1-3 Year Corporate Bond Index are service marks of Bloomberg Finance L.P. and its affiliates, including Bloomberg Index Services Limited ("BISL"), the administrator of the index (collectively, "Bloomberg") and have been licensed for use for certain purposes by State Street Global Advisors. Bloomberg is not affiliated with State Street Global Advisors, and Bloomberg does not approve, endorse, review, or recommend State Street Target Retirement 2020 Fund. Bloomberg does not guarantee the timeliness, accurateness, or completeness of any data or information relating to State Street Target Retirement 2020 Fund.

The funds or securities referred to herein are not sponsored, endorsed, or promoted by MSCI, and MSCI bears no liability with respect to any such funds or securities or any index on which such funds or securities are based. The Prospectus contains a more detailed description of the limited relationship MSCI has with SSGA Funds Management, Inc and any related funds.

The State Street Target Retirement 2020 Composite Index consists of several different indexes, and is designed to provide exposure to a variety of asset classes. The State Street Target Retirement 2020 Composite Index will contain one or more of the following indexes: S&P 500 Index, Russell Small Cap Completeness<sup>®</sup> Index, MSCI ACWI ex USA IMI Index, Bloomberg U.S. Aggregate Index, Bloomberg U.S. Government Inflation-linked Bond Index, Bloomberg US Government Inflation-Linked 1-10 Year Bond Index, Bloomberg High Yield Very Liquid Index, Dow Jones Global Select Real Estate Securities Index, Bloomberg Long U.S. Treasury Index, Bloomberg 1-3 Year U.S. Treasury Index and / or Bloomberg U.S. 1-3 Year Corporate Bond Index.

**Distributor:** State Street Global Advisors Funds Distributors, LLC, member FINRA, SIPC, an indirect wholly owned subsidiary of State Street Corporation. References to State Street may include State Street Corporation and its affiliates. The SSGA<sup>®</sup> Funds pay State Street Bank and Trust Company for its services as custodian, transfer agent and shareholder servicing agent and pays SSGA Funds Management, Inc. for investment advisory services.

**Before investing, consider the funds' investment objectives, risks, charges and expenses. To obtain a prospectus or summary prospectus which contains this and other information, call 1-800-997-7327 or visit ssga.com. Read it carefully.**

© 2024 State Street Corporation.  
All Rights Reserved.  
Tracking Number: 6017092.2.3.AM.RTL  
Expiration Date: 07/31/2024  
20240416/21:59