

Convertible Bond Indices

An Overview

SPDR EMEA Strategy & Research

When investing in convertible bond indices, it is important to understand the composition. Inclusion criteria can lead to major differences in exposure across indices.

Inclusion Criteria

The following table provides a summary of the key security inclusion criteria for each of the Refinitiv indices.

The main differences between the three indices, in terms of inclusion criteria, are the minimum issue size, concentration level cap, and price/premium testing. The Global Focus Index has a larger minimum amount outstanding compared to the other two indices, particularly around US bonds where issues have to be greater than \$500 million in size. Both the Global Focus and Qualified Global Index have concentration level caps of 4%, whilst the Global Index has 2%.

This difference leads to there being a greater number of constituents in the Global Index as more securities meet the concentration level cap (see Figure 1). The price/premium test, which is applied to the Global Focus Index but not the Global Qualified Index, is also an important differentiator. The test ensures that the delta of the index remains within a defined range. Later in this document we comment on delta and its contribution to performance.

Figure 1
Refinitiv Global Convertible Index Methodology Comparison

Index Criteria	Refinitiv Qualified Global Index (Benchmark for SPDR ETF)	Refinitiv Global Index	Refinitiv Global Focus Index
Minimum Amount Outstanding	Higher and all in local currency	Lower and all in USD	Higher and all in local currency
US	\$350mn	\$300mn	\$500mn
Europe	€375mn	\$200mn	€375mn
Asia	\$275mn	\$100mn	\$275mn
Japan	¥22bn	\$100mn	¥22bn
Other	\$275mn	\$200mn	\$275mn
Eligible Securities	No mandatory, perpetual, or 144A issues	Mandatory and perpetual issues included	No mandatory or perpetual issues
Reselection	Quarterly from Global	Quarterly from Total Universe	Quarterly from Global
Add/Drop Process	Adds at monthly rebalance only Immediate drops for events Quarterly reselection adds/drops	Immediate new issue adds Immediate drops for events Quarterly reselection adds/drops	Adds/drops at monthly rebalance Immediate drops for events Quarterly reselection adds/drops
Concentration Level Cap* (%)	4	2	4
Price & Premium Test	No price limits	No price limits	Dropped if too deeply in the money Dropped if too deeply out of the money

Source: Refinitiv, as of 31 July 2024.

* Concentration factors are calculated based on market capitalisation of issues from a single issuer and market capitalisation of issues with underlying assets from a single issuer.

Characteristic Breakdown

Figure 2
Turnover Statistics

In the following sections we highlight the key characteristics of each index.

Calendar Year	Refinitiv Qualified Global Convertibles Index (%)	Refinitiv Global Convertibles Index (%)	Refinitiv Global Focus Convertibles Index (%)
2009	47.7	57.8	76.6
2010	34.1	39.5	72.1
2011	46.3	40.4	81.9
2012	31.2	34.3	64.7
2013	55.7	55.9	113.7
2014	59.5	49.8	88.4
2015	66.5	56.1	86.7
2016	39.9	44.6	70.9
2017	45.3	46.1	69.0
2018	55.2	52.4	84.1
2019	57.7	57.8	81.2
2020	60.8	63.3	160.0
2021	71.5	48.4	125.1
2022	43.4	35.0	132.3
2023	39.2	46.5	105.7

Source: State Street Global Advisors, Refinitiv as of 31 December 2023. Turnover is measured by the total value of all adds and drops as a percentage of that day's market cap and then summated for each calendar year. Turnover analysis shown above are as of the date indicated, and are subject to change.

On a market capitalisation basis, the Focus Index encompasses \$178 billion of the total global convertible bond universe, whilst the Qualified Index captures a more representative \$243 billion.¹ The Global Convertible Index has the largest market cap at \$353 billion.² In terms of yield, the average running yield is 113bps for the Qualified Global Index and 152bps for the Global Focus Index.³ The Global Index yield is higher at 169bps due to the lower minimum outstanding requirement; this results in the inclusion of bonds from smaller issuers that tend to require larger coupons in order to attract investors.⁴

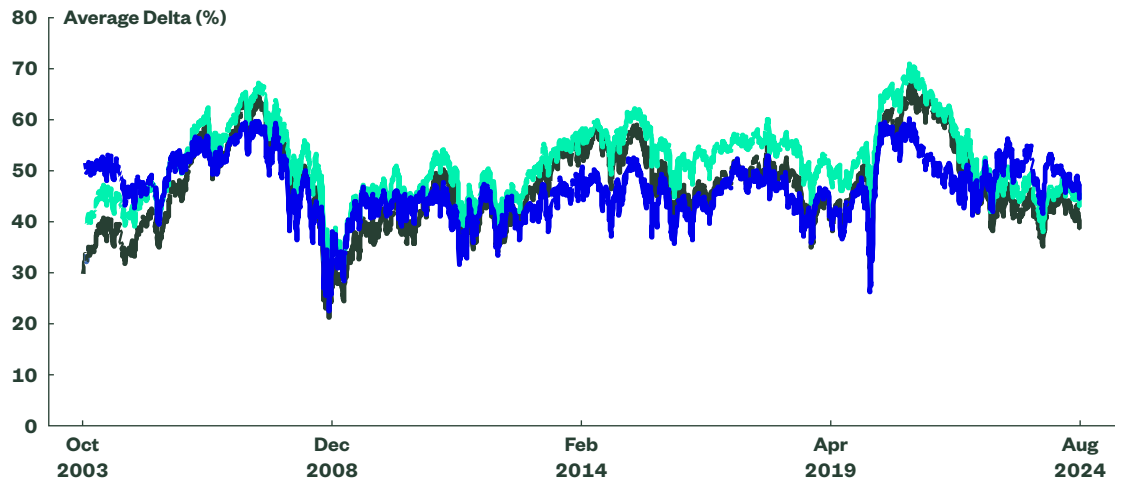
2024 so far has been characterised by some degree of volatility. However, year to date net issuance is in positive territory with close to 14bn\$, ending almost three years of negative issuance as large issues awoke the market. Turnover was lower in 2023 vs previous years. In 2024, turnover will be driven by the issuance and redemptions of bonds which may be slightly higher than in 2023 as expectations of ca 100bn\$ of new issuance for the year still appears in sight (at the time of writing). We note that the Global Focus index has historically seen a higher level of turnover due to the tests on prices and premia that exclude bonds and reincludes them as prices move beyond and below certain levels.

Delta

Delta measures the sensitivity of a convertible bond price to changes in the price of the underlying stock. The historical average delta of each index is plotted in Figure 3. The Qualified Global Index (delta 41.2) is slightly less sensitive to equity price movements compared to the Global Focus Index (47.2).⁵ The Global Convertible Index delta is 45.5, which is in part due to its including bonds with mandatory conversion clauses.⁶ These bonds tend to be issued with conversion prices closer to 'at the money', which in turn affects the overall delta of the index.

Figure 3
Average Delta

- Refinitiv Qualified Global Convertible Index
- Refinitiv Global Convertible Index
- Refinitiv Global Focus Convertible Index



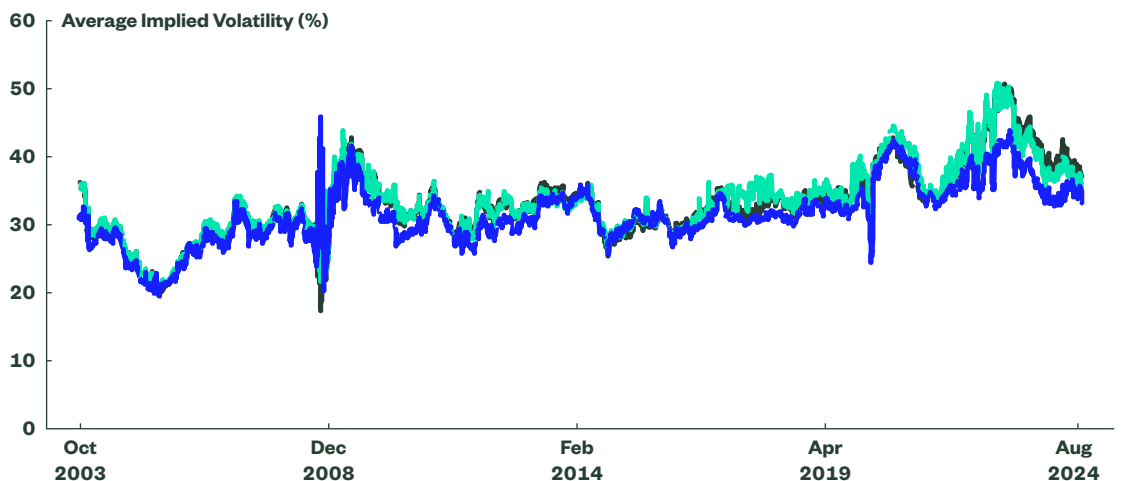
Source: Refinitiv, as of 31 July 2024 in USD. Delta shown above is subject to change. The Refinitiv Qualified Global Convertible Index was inceptioned on 10 December 2008. Results prior to this date were back-test calculated by using available data at the time in accordance with the Index's current methodology. Refinitiv Qualified Global Convertible Bond Index includes back-tested returns supplied by Refinitiv. Effective 1 June 2020, the index name has been changed from Thomson Reuters Qualified Global Convertible Index to Refinitiv Qualified Global Convertible Index.

Implied Volatility

The implied volatility of a convertible bond is a measure used to value the worth of the bond's option component. With increased geopolitical conflict, inflation falling from 40-year highs, high interest rates and sometimes negative equity and bond market returns, volatility rose sharply and hit above average levels in the third quarter of 2022. While implied volatility has been higher than realised volatility, it receded from 2022 peaks and this helped support the performance of the convertible bond asset in 2023. So far this year, implied volatility remained higher than realised volatility as markets digested a number of notable economic and geo-political developments. After experiencing a surge at the beginning of August, volatility moderated as market data alleviated recession fears and supported expectations of rate cuts from the Fed in the remainder of 2024. Looking ahead, volatility may rise again especially heading into the November US election. Figure 4 shows the historical average implied volatility of the three indices.

Figure 4
Average Implied Volatility

- Refinitiv Qualified Global Convertible Index
- Refinitiv Global Convertible Index
- Refinitiv Global Focus Convertible Index



Source: Refinitiv, as of 31 July 2024 in USD. Implied Volatility shown above are subject to change. The Refinitiv Qualified Global Convertible Index was inceptioned on 10 December 2008. Results prior to this date were back-test calculated by using available data at the time in accordance with the Index's current methodology. Refinitiv Qualified Global Convertible Bond Index includes back-tested returns supplied by Refinitiv. Effective 1 June 2020, the index name has been changed from Thomson Reuters Qualified Global Convertible Index to Refinitiv Qualified Global Convertible Index.

Regional, Currency and Sector Breakdown

All three indices are global in terms of exposures. Figure 6a shows the regional breakdown of each index. Of note, the Global Focus index has a lower exposure to the US compared to the other two indices, with the difference spread over other regions.

The regional breakdown bias is also evident in the currency breakdown (see Figure 6b), and there are also sector differences between the three indices (Figure 6c).

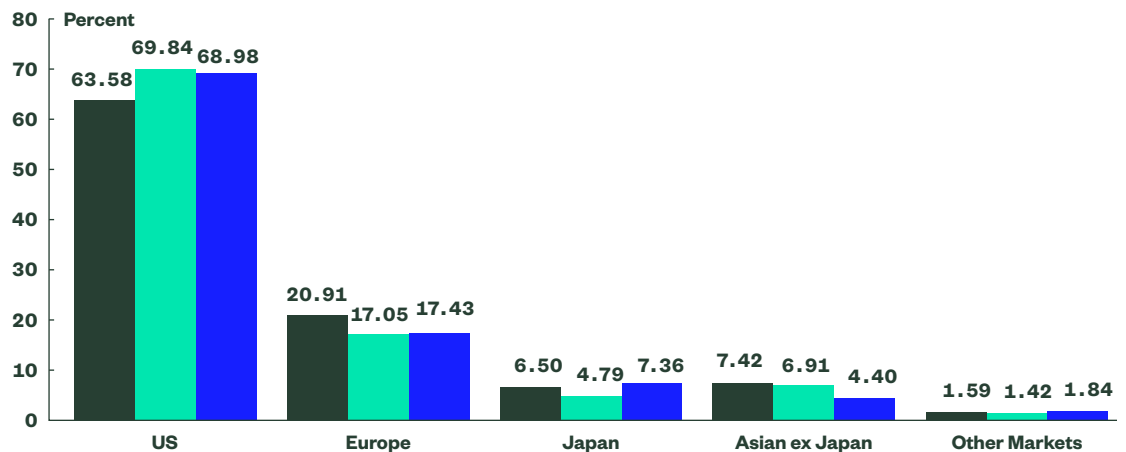
Figure 5
Convertible Bond Indices Overview

Index Characteristics Convertible Index	Refinitiv Qualified Global Convertibles Index (%)	Refinitiv Global Convertibles Index (%)	Refinitiv Global Focus Convertibles Index (%)
Number of Issues	344	515	239
Market Capitalisation (\$B)	243	353	178
Average Running Yield (%)	1.13	1.69	1.52
Weighted Average Delta	41.2	45.5	47.2
Implied Volatility	37.2	36.2	34.8
Base Date of Index	10-Dec-08 (History: 11-Apr-2003)	31-Dec-93	31-Dec-93

Source: Refinitiv, as of 31 July 2024. Characteristics are as of the date indicated, are subject to change, and should not be relied upon as current thereafter. Past performance is not a guarantee of future results.

Figure 6a
Regional Breakdown

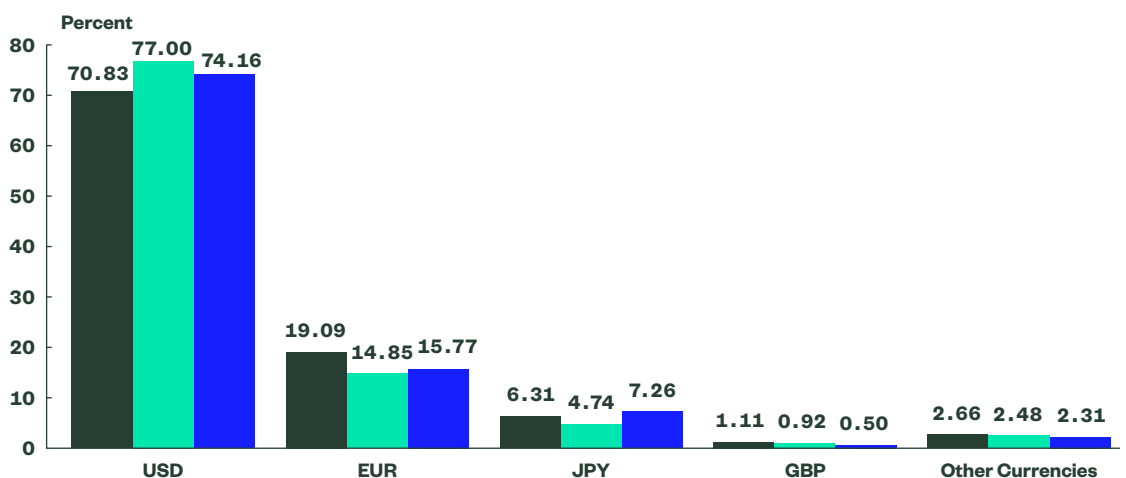
■ Refinitiv Qualified Global Convertible Index
■ Refinitiv Global Convertible Index
■ Refinitiv Global Focus Convertible Index



Source: Refinitiv, as of 31 July 2024. Regional breakdowns are as of the date indicated, are subject to change, and should not be relied upon as current thereafter. **Past performance is not a guarantee of future results.** 'Other Markets' includes: United Arab Emirates, Israel and South Africa and will vary with issuance.

Figure 6b
Currency Breakdown

■ Refinitiv Qualified Global Convertible Index
■ Refinitiv Global Convertible Index
■ Refinitiv Global Focus Convertible Index

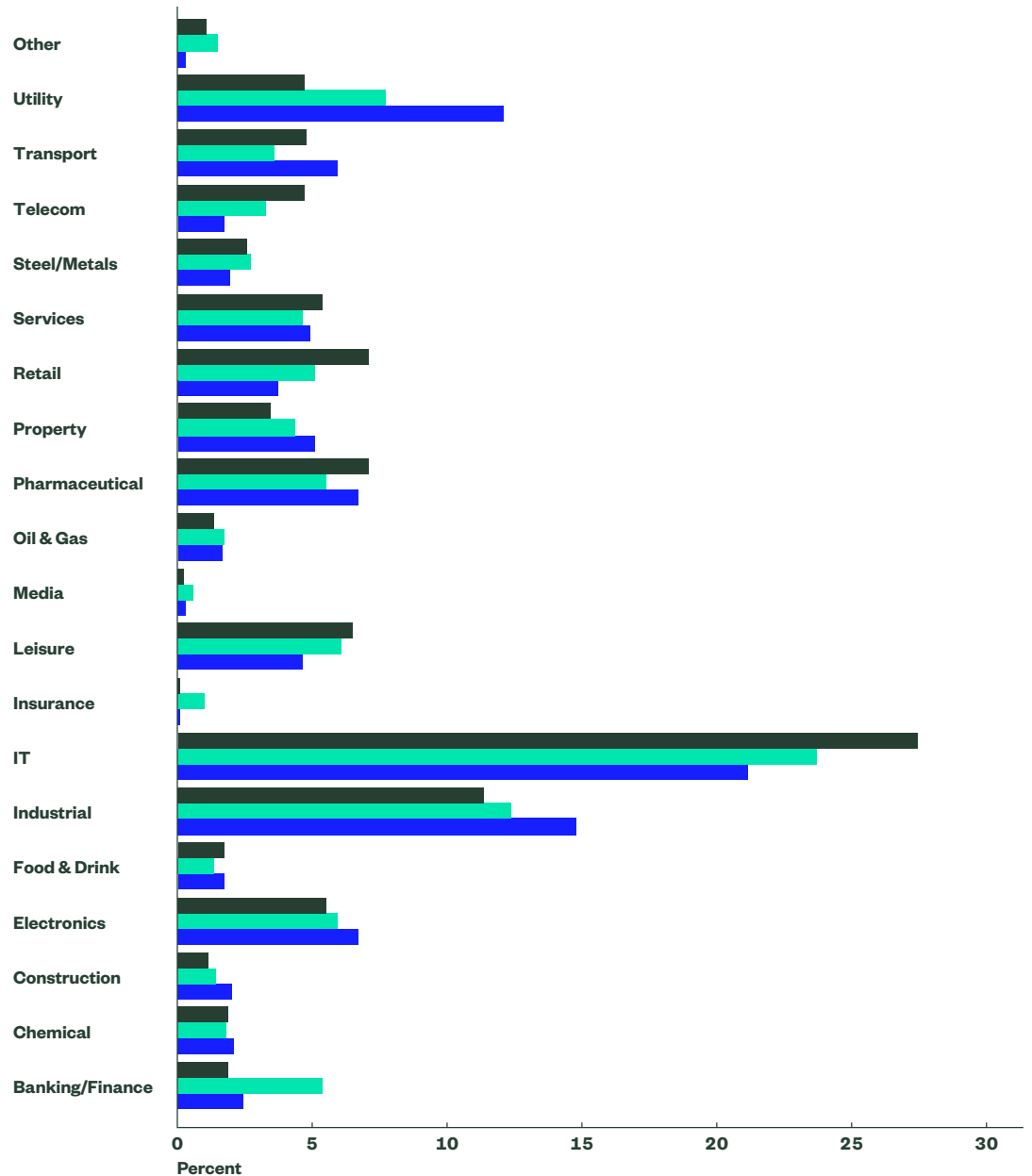


Source: Refinitiv, as of 31 July 2024. Currency breakdowns are as of the date indicated, are subject to change, and should not be relied upon as current thereafter. **Past performance is not a guarantee of future results.** 'Other Currencies' includes: SGD, CNH, HKD, TWD, CHF, KRW, ZAR, SEK.

Figure 6c

Sector Breakdown

- Refinitiv Qualified Global Convertible Index
- Refinitiv Global Convertible Index
- Refinitiv Global Focus Convertible Index



Source: Refinitiv, as of 31 July 2024. Sector weights are as of date indicated, are subject to change, and should not be relied upon as current thereafter. This information should not be considered a recommendation to invest in a particular sector or to buy or sell any security shown. It is not known whether the sectors or securities shown will be profitable in the future.

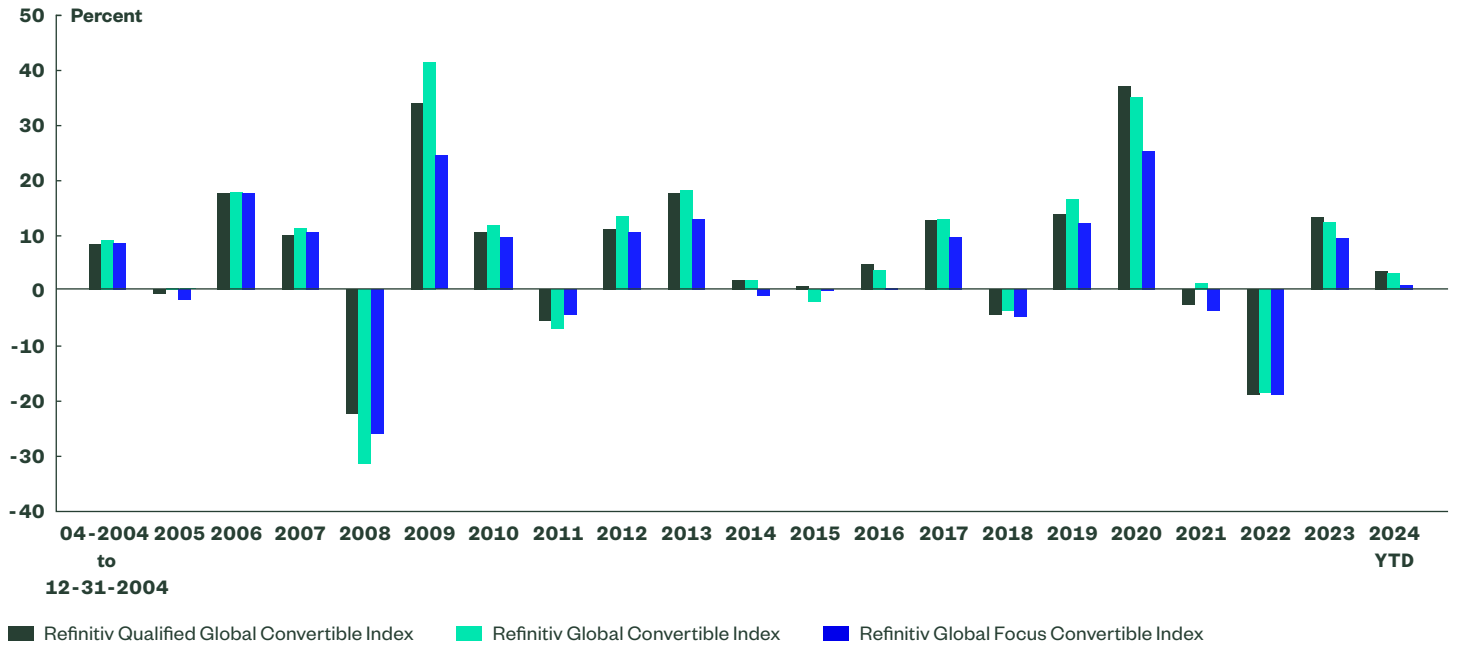
Performance

Finally, when looking at the overall performance of the three indices we can see that, historically, the Qualified Global Index, which the SPDR ETF tracks, has performed well compared to its peers in particular since the ETF’s inception in October 2014 (see Figure 7). A salient point to note is that the ten-year performance of the Qualified Index, at an annual average of close to 4.64%, is only marginally lower than that of the Global Index (4.79%) despite the fact that equity sensitivity ‘delta’ and implied volatility (or ‘cost of optionality’) have been lower. Meanwhile the lower gearing of the Global Focus has weighed on its performance, returning only 1.87% annualised over 10 years (in USD unhedged terms).

Summary

Understanding the characteristics of different global convertible bond indices is important, given that the portfolio benchmark becomes the basis for an investor’s beta. Though at first glance these three indices may appear similar, there are material differences in their inclusion criteria. These differences mean that each index will have different risk and return characteristics, and investors should consider these factors carefully when choosing their benchmark.

Figure 7
Calendar Performance



Source: Refinitiv, as of 31 July 2024, Total Returns in USD. Qualified Index includes back-tested returns supplied by Refinitiv. **Index returns are unmanaged and do not reflect the deduction of any fees or expenses. Index returns reflect all items of income, gain and loss and the reinvestment of dividends and other income as applicable. Index performance is not meant to represent that of any particular fund. Past performance is not an indicator of future performance.** The Refinitiv Qualified Global Convertible Index was inceptioned on 11 December 2008. Results prior to this date were back-test calculated by using available data at the time in accordance with the Index’s current methodology. Effective 1 June 2020, the index name was changed from Thomson Reuters Qualified Global Convertible Index to Refinitiv Qualified Global Convertible Index.

Endnotes

- 1 Source: Refinitiv, as of 31 July 2024.
- 2 Source: Refinitiv, as of 31 July 2024.
- 3 Source: Refinitiv, as of 31 July 2024.
- 4 Source: Refinitiv, as of 31 July 2024.
- 5 Source: Refinitiv, as of 31 July 2024.
- 6 Source: Refinitiv, as of 31 July 2024.

Information Classification: General Access

**Marketing communication.
For professional client use only.**

Belgium: State Street Global Advisors Belgium, Chaussée de La Hulpe 185, 1170 Brussels, Belgium. T: +32 2 663 2036. State Street Global Advisors Belgium is a branch office of State Street Global Advisors Europe Limited, registered in Ireland with company number 49934, authorised and regulated by the Central Bank of Ireland, and whose registered office is at 78 Sir John Rogerson's Quay, Dublin 2.

France: State Street Global Advisors Europe Limited, France Branch ("State Street Global Advisors France") is a branch of State Street Global Advisors Europe Limited, registered in Ireland with company number 49934, authorised and regulated by the Central Bank of Ireland, and whose registered office is at 78 Sir John Rogerson's Quay, Dublin 2. State Street Global Advisors France is registered in France with company number RCS Nanterre 899 183 289, and its office is located at Coeur Défense – Tour A – La Défense 4, 33e étage, 100, Esplanade du Général de Gaulle, 92 931 Paris La Défense Cedex, France. T: +33 1 44 45 40 00. F: +33 1 44 45 41 92.

Germany: State Street Global Advisors Europe Limited, Branch in Germany, Briener Strasse 59, D-80333 Munich, Germany ("State Street Global Advisors Germany"). T: +49 (0)89 55878 400. State Street Global Advisors Germany is a branch of State Street Global Advisors Europe Limited, registered in Ireland with company number 49934, authorised and regulated by the Central Bank of Ireland, and whose registered office is at 78 Sir John Rogerson's Quay, Dublin 2.

Ireland: State Street Global Advisors Europe Limited is regulated by the Central Bank of Ireland. Registered office address 78 Sir John Rogerson's Quay, Dublin 2. Registered Number: 49934. T: +353 (0)1 776 3000. F: +353 (0)1 776 3300.

Israel: No action has been taken or will be taken in Israel that would permit a public offering of the Securities or distribution of this sales brochure to the public in Israel. This sales brochure has not been approved by the Israel Securities Authority (the 'ISA').

Accordingly, the Securities shall only be sold in Israel to an investor of the type listed in the First Schedule to the Israeli Securities Law, 1978, which has confirmed in writing that it falls within one of the categories listed therein (accompanied by external confirmation where this is required under ISA guidelines), that it is aware of the implications of being considered such an investor and consents thereto, and further that the Securities are being purchased for its own account and not for the purpose of re-sale or distribution.

This sales brochure may not be reproduced or used for any other purpose, nor be furnished to any other person other than those to whom copies have been sent.

Nothing in this sales brochure should be considered investment advice or investment marketing as defined in the Regulation of Investment Advice, Investment Marketing and Portfolio

Management Law, 1995 ("the Investment Advice Law"). Investors are encouraged to seek competent investment advice from a locally licensed investment advisor prior to making any investment. State Street is not licensed under the Investment Advice Law, nor does it carry the insurance as required of a licensee thereunder.

This sales brochure does not constitute an offer to sell or solicitation of an offer to buy any securities other than the Securities offered hereby, nor does it constitute an offer to sell to or solicitation of an offer to buy from any person or persons in any state or other jurisdiction in which such offer or solicitation would be unlawful, or in which the person making such offer or solicitation is not qualified to do so, or to a person or persons to whom it is unlawful to make such offer or solicitation.

Italy: State Street Global Advisors Europe Limited, Italy Branch ("State Street Global Advisors Italy") is a branch of State Street Global Advisors Europe Limited, registered in Ireland with company number 49934, authorised and regulated by the Central Bank of Ireland, and whose registered office is at 78 Sir John Rogerson's Quay, Dublin 2. State Street Global Advisors Italy is registered in Italy with company number 11871450968 – REA: 2628603 and VAT number 11871450968, and its office is located at Via Ferrante Aporti, 10 - 20125 Milan, Italy. T: +39 02 32066 100. F: +39 02 32066 155.

Netherlands: State Street Global Advisors Netherlands, Apollo Building 7th floor, Herikerbergweg 29, 1101 GN Amsterdam, Netherlands. T: +31 20 7181 000. State Street Global Advisors Netherlands is a branch office of State Street Global Advisors Europe Limited, registered in Ireland with company number 49934, authorised and regulated by the Central Bank of Ireland, and whose registered office is at 78 Sir John Rogerson's Quay, Dublin 2.

Switzerland: State Street Global Advisors AG, Beethovenstr. 19, CH-8027 Zurich. Registered with the Register of Commerce Zurich CHE-105.078.458. T: +41 (0)44 245 70 00. F: +41 (0)44 245 70 16.

United Kingdom: State Street Global Advisors Limited. Authorised and regulated by the Financial Conduct Authority. Registered in England. Registered No. 2509928. VAT No. 5776591 81. Registered office: 20 Churchill Place, Canary Wharf, London, E14 5HJ. T: 020 3395 6000. F: 020 3395 6350.

The S&P 500® Index is a product of S&P Dow Jones Indices LLC or its affiliates ("S&P DJI") and have been licensed for use by State Street Global Advisors. S&P®, SPDR®, S&P 500®, US 500 and the 500 are trademarks of Standard & Poor's Financial Services LLC ("S&P"); Dow Jones® is a registered trademark of Dow Jones Trademark Holdings LLC ("Dow Jones") and has been licensed for use by S&P Dow Jones Indices; and these trademarks have been licensed for use by S&P DJI and sublicensed for certain purposes by State Street Global Advisors. The fund is not sponsored, endorsed, sold or promoted by S&P DJI, Dow Jones, S&P, their respective affiliates, and none of such parties make any representation regarding the advisability of investing in such product(s) nor do they have any liability for any errors, omissions, or interruptions of these indices. Investing involves risk including the risk of loss of principal.

The whole or any part of this work may not be reproduced, copied or transmitted or any of its contents disclosed to third parties without SSGA's express written consent.

The information provided does not constitute investment advice as such term is defined under the Markets in Financial Instruments Directive (2014/65/EU) or applicable Swiss regulation and it should not be relied on as such. It should not be considered a solicitation to buy or an offer to sell any investment. It does not take into account any investor's or potential investor's particular investment objectives, strategies, tax status, risk appetite or investment horizon. If you require investment advice you should consult your tax and financial or other professional advisor.

All information is from SSGA unless otherwise noted and has been obtained from sources believed to be reliable, but its accuracy is not guaranteed. There is no representation or warranty as to the current accuracy, reliability or completeness of, nor liability for, decisions based on such information and it should not be relied on as such.

ETFs trade like stocks, are subject to investment risk and will fluctuate in market value. The investment return and principal value of an investment will fluctuate in value, so that when shares are sold or redeemed, they may be worth more or less than when they were purchased. Although shares may be bought or sold on an exchange through any brokerage account, shares are not individually redeemable from the fund. Investors may acquire shares and tender them for redemption through the fund in large aggregations known as "creation units." Please see the fund's prospectus for more details. Past performance is not a reliable indicator of future performance.

This communication is directed at professional clients (this includes eligible counterparties as defined by the appropriate EU regulator or Swiss Regulator) who are deemed both knowledgeable and experienced in matters relating to investments.

The products and services to which this communication relates are only available to such persons and persons of any other description (including retail clients) should not rely on this communication.

Equity securities may fluctuate in value and can decline significantly in response to the activities of individual companies and general market and economic conditions.

Bonds generally present less short-term risk and volatility than stocks, but contain interest rate risk (as interest rates rise, bond prices usually fall); issuer default risk; issuer credit risk; liquidity risk; and inflation risk. These effects are usually pronounced for longer-term securities. Any fixed income security sold or redeemed prior to maturity may be subject to a substantial gain or loss.

Investing in high yield fixed income securities, otherwise known as "junk bonds", is considered speculative and involves greater risk of loss of principal and interest than investing in investment grade fixed income securities. These Lower-quality debt securities involve greater risk of default or price changes due to potential changes in the credit quality of the issuer.

Investing in REITs involves certain distinct risks in addition to those risks associated with investing in the real estate industry in general. Equity REITs may be affected by changes in the value of the underlying property owned by the REITs, while mortgage REITs may be affected by the quality of credit extended. REITs are subject to heavy cash flow dependency, default by borrowers and self-liquidation. REITs, especially mortgage REITs, are also subject to interest rate risk (i.e., as interest rates rise, the value of the REIT may decline).

There are risks associated with investing in Real Assets and the Real Assets sector, including real estate, precious metals and natural resources. Investments can be significantly affected by events relating to these industries. International Government bonds and corporate bonds generally have more moderate short-term price fluctuations than stocks, but provide lower potential long-term returns.

Flows are as of the date indicated, are subject to change, and should not be relied upon as current thereafter.

Investing in commodities entail significant risk and is not appropriate for all investors.

Commodities investing entail significant risk as commodity prices can be extremely volatile due to wide range of factors. A few such factors include overall market movements, real or perceived inflationary trends, commodity index volatility, international, economic and political changes, change in interest and currency exchange rates.

Investing in foreign domiciled securities may involve risk of capital loss from unfavourable fluctuation in currency values, withholding taxes, from differences in generally accepted accounting principles or from economic or political instability in other nations. Investments in emerging or developing markets may be more volatile and less liquid than investing in developed markets and may involve exposure to economic structures that are generally less diverse and mature and to political systems which have less stability than those of more developed countries.

The returns on a portfolio of securities which exclude companies that do not meet the portfolio's specified ESG criteria may trail the returns on a portfolio of securities which include such companies. A portfolio's ESG criteria may result in the portfolio investing in industry sectors or securities which underperform the market as a whole.

The information contained in this communication is not a research recommendation or 'investment research' and is classified as a 'Marketing Communication' in accordance with the Markets in Financial Instruments Directive (2014/65/EU). This means that this marketing communication (a) has not been prepared in accordance with legal requirements designed to promote the independence of investment research (b) is not subject to any prohibition on dealing ahead of the dissemination of investment research.

© 2025 State Street Corporation.
All Rights Reserved.
ID2636801-2010625.15.2.EMEA.INST 0225
Exp. Date: 30/06/2025